



BEST & FAIREST · INDICA-CLASSIFIED CHEMOTYPE

T27 Indica

Cultivar — Marshmallow OG

TOTAL THC (LABEL) **27%** TOTAL CBD (LABEL) **<1%**

SCHEDULE 8 CATEGORY 5 SAS-B / AP

DOMINANT TERPENE · MYRCENE (0.85%)

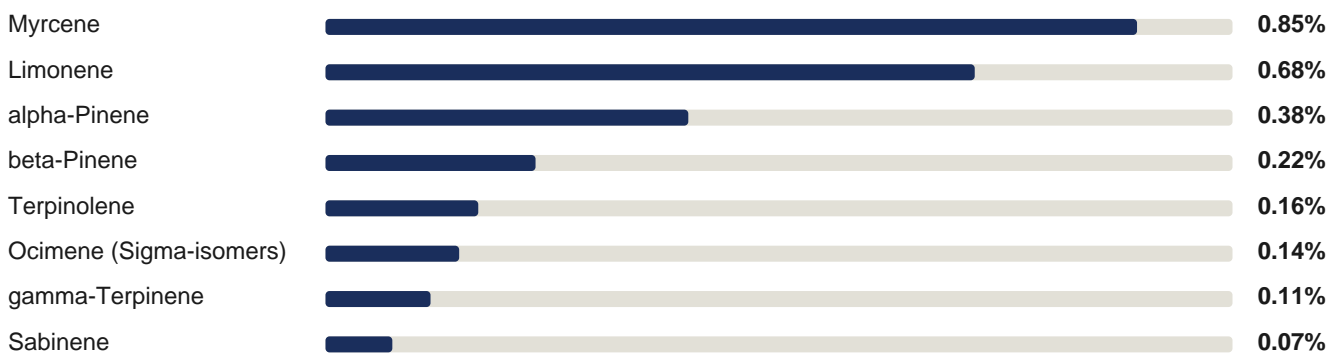
TERPENE PROFILE

Aromatic fingerprint

<p>#1 Myrcene 0.85%</p> <p><i>Earthy, musk, herbal clove</i></p> <p>Most abundant monoterpene in many Cannabis chemotypes; also found in hops, lemongrass and thyme.</p>	<p>#2 Limonene 0.68%</p> <p><i>Citrus, bright, sweet</i></p> <p>Predominant terpene in citrus peel oil; widespread across food and botanical extracts.</p>	<p>#3 alpha-Pinene 0.38%</p> <p><i>Pine, fresh herbal, resinous</i></p> <p>Most widespread terpene in nature; characteristic of pine resin, rosemary and conifer needles.</p>
--	--	---

Terpene profile (% w/w, dry basis)

15 monoterpene analytes above LOR



CANNABINOID & POTENCY PROFILE

Assay and batch detail

Cannabinoid	Result (% w/w, dry basis)
Total THC	27%
Δ ⁹ -THC (free)	0.35%
Total CBD	<1%
CBD (free)	<0.10%
CBGA	1.20%

Potency figures are the finished-batch assay; individual cannabinoid rows are from the batch Certificate of Analysis. Dashes/LOR values indicate results below the laboratory reporting limit. Source: accredited laboratory CoA for batch **B60178**.

TERPENE DETAIL

Top terpenes, aroma and source

Terpene	% w/w	Character	Notes
Myrcene	0.85%	Earthy, musk, herbal clove	Most abundant monoterpene in many Cannabis chemotypes; also found in hops, lemongrass and thyme.
Limonene	0.68%	Citrus, bright, sweet	Predominant terpene in citrus peel oil; widespread across food and botanical extracts.
alpha-Pinene	0.38%	Pine, fresh herbal, resinous	Most widespread terpene in nature; characteristic of pine resin, rosemary and conifer needles.
beta-Pinene	0.22%	Pine, peppery, woody	Co-occurs with alpha-pinene; contributes to herbal, pine and dry woody facets.
Terpinolene	0.16%	Fresh, sweet-herbal, floral	Minor terpene in tea tree, nutmeg and apples; often associated with uplifting profiles.

PRESCRIBING CONTEXT

Clinical considerations

Commonly patient-reported experiences

Patients prescribed high-THC dried flower chemotypes commonly self-report relaxation, anxiolysis, altered perception of pain, appetite stimulation, dry mouth, and short-term cognitive/psychomotor changes. Vaporisation onset is minutes; peak 10–30 min; duration 2–4 h. Response varies with dose, technique, concurrent medicines and tolerance.

Access pathway

Unapproved therapeutic good — **Category 5** medicinal cannabis product not entered on the ARTG. Supplied under the TGA Special Access Scheme (SAS-B) or by an Authorised Prescriber (AP) pathway. Schedule 8 — prescribing, storage and record-keeping per state controlled-drug law. In Queensland, dispensing requires Regulation 61 approval.

Initiation and titration

Cannabis-naïve patients: one low-dose inhalation (0.5–10 mg product), wait 15 min to assess. Titrate by symptom, tolerability and duration. Counsel against combustion; use a medical-grade vaporiser.

Interactions and cautions

THC is metabolised via CYP3A4 and CYP2C9 — interaction potential with strong CYP inducers/inhibitors, azoles, macrolides, valproate, warfarin, SSRIs. Use caution with personal/family history of psychosis, severe CVD, pregnancy/breastfeeding, adolescence, and concurrent CNS depressants.

Driving and impairment — QLD zero-tolerance. THC is detectable in oral fluid and blood for hours to days after use. Queensland enforces a zero-tolerance roadside test for active THC under the Transport Operations (Road Use Management) Act 1995. Counsel all patients not to drive or operate machinery while using this medicine.

PRODUCT DETAILS

Dosage form	Dried cannabis flower	Batch	B60178
Route	Vaporisation (inhalation)	Manufactured	May 2026
Pack size	30 g (minimum net)	Expiry	May 2027
Storage	Store below 25 °C. Protect from light. Keep out of reach and sight of children.	Compliance	Manufactured in accordance with TGO 93 and Ph. Eur. 5.1.4

Sponsor. Naturally Elevated Pty Ltd · ABN 91 636 315 109 · 67 Bancroft Road, Pinkenba, QLD, 4008 · 1300 120 581 · Hello@NaturallyElevated.com.au · NaturallyElevated.com.au. Prepared for registered Australian healthcare professionals for SAS-B / AP use — not promotional, no therapeutic claims. Document ID: NE-PROFILE-BF-INDICA-T27-v2.0 - Prepared May 2026 turally Elevated Pty Ltd.